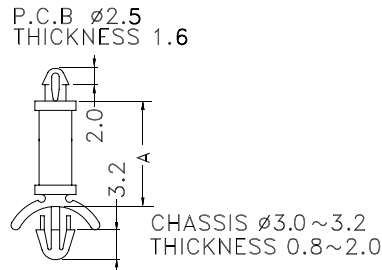
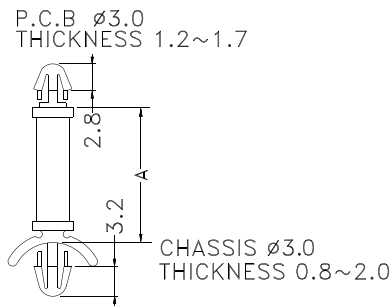


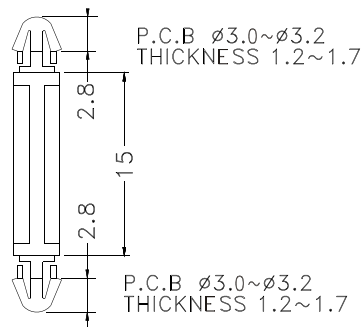
PART NO	A	PACKAGE
LCMA-3.2	3.2	1000
LCMA-4.8	4.8	
LCMA-6.4	6.4	
LCMA-7.9	7.9	
LCMA-9.5	9.5	
LCMA-11.1	11.1	
LCMA-12.7	12.7	
LCMA-14.3	14.3	
LCMA-15.9	15.9	



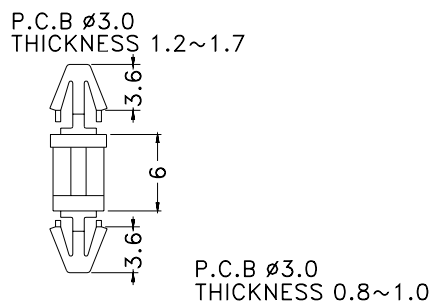
PART NO	A	PACKAGE
LCMD-3.2	3.2	1000
LCMD-4.8	4.8	
LCMD-6.4	6.4	
LCMD-7.9	7.9	
LCMD-9.5	9.5	
LCMD-11.1	11.1	
LCMD-12.7	12.7	
LCMD-14.3	14.3	
LCMD-15.9	15.9	



PART NO	A	PACKAGE
LCG-3	3.2	1000
LCG-5	4.8	
LCG-6	6.4	
LCG-8	7.9	
LCG-9	9.5	
LCG-11	11.1	
LCG-12	12.7	
LCG-14	14.3	
LCG-15	15.9	
LCG-19	19.0	



PART NO	PACKAGE
LCJ-15	1000

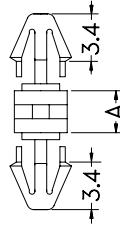


PART NO	PACKAGE
LCV-6	1000

- ◆ MATERIAL: NYLON 66(UL)
- ◆ FLAME CLASS :94V-2
- ◆ COLOR:NATURAL
- ◆ UNIT:mm

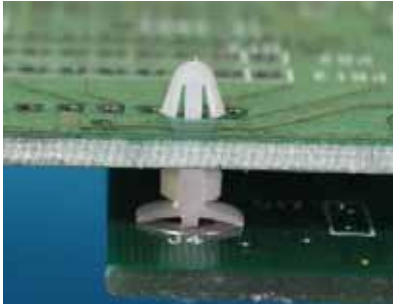


P.C.B ϕ 3.0
THICKNESS 1.6 ~ 1.8

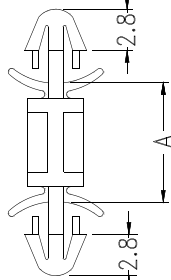


P.C.B: ϕ 3.0
THICKNESS: 1.6 ~ 1.8

PART NO	A	PACKAGE
LCV-3	3.0	1000
LCV-5	5.0	

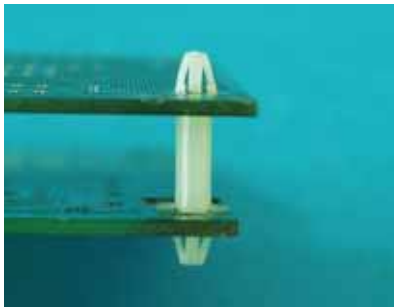


P.C.B ϕ 3.0
THICKNESS 1.2~2.0

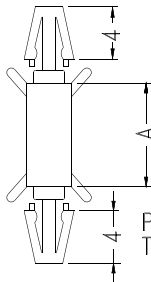


P.C.B ϕ 3.0
THICKNESS 1.2~2.0

PART NO	A	PACKAGE
LCF-3	3.2	1000
LCF-5	5.0	
LCF-6	6.35	
LCF-7	7.0	
LCF-8	8.0	
LCF-9	9.5	
LCF-11	11.2	
LCF-12	12.0	
LCF-15	15.0	
LCF-16	16.0	
LCF-17	17.0	
LCF-20	20.0	
LCF-22	22.0	
LCF-25	25.4	



P.C.B ϕ 3.0
THICKNESS 1.2~1.7

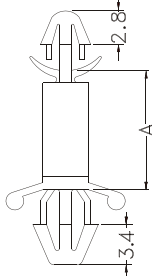


P.C.B ϕ 3.0
THICKNESS 1.2~1.7

PART NO	A	PACKAGE
LCA-6	6.3	1000
LCA-8	8.0	
LCA-10	10.0	
LCA-12	12.7	



P.C.B ϕ 3.0
THICKNESS 0.8~2.0

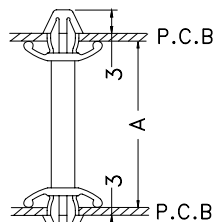


CHASSIS ϕ 4.0
THICKNESS 1.2~2.6

PART NO	A	PACKAGE
LCH-3	3.5	2000
LCH-5	5.0	
LCH-6	6.3	1000
LCH-7	7.4	
LCH-10	10.0	
LCH-11	11.0	
LCH-12	12.7	
LCH-15	15.9	



P.C.B ϕ 4.0
THICKNESS 1.6



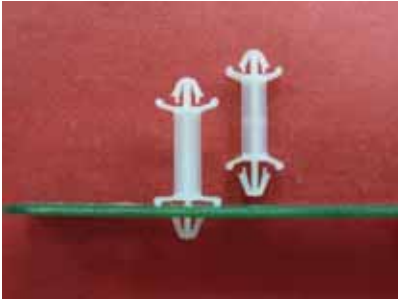
P.C.B ϕ 4.0
THICKNESS 1.6

PART NO	A	PACKAGE
CBLSS-6	6.0	1000
CBLSS-8	8.0	
CBLSS-10	10.0	
CBLSS-12	12.0	
CBLSS-13	13.0	
CBLSS-14	14.0	
CBLSS-16	16.0	
CBLSS-16.8	16.8	
CBLSS-18	18.0	
CBLSS-20	20.0	

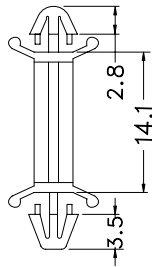
SPACER SUPPORT- Clip / Clip Type

Hankook Fastener

- ◆ MATERIAL: NYLON 66 (UL)
- ◆ FLAME CLASS :94V-2
- ◆ COLOR:NATURAL
- ◆ UNIT:mm

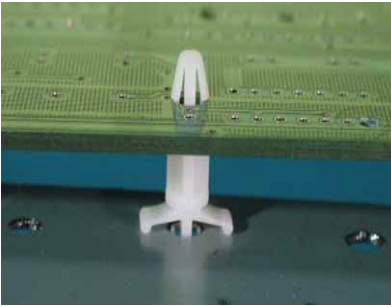


P.C.B ϕ 3.5
THICKNESS 1.0

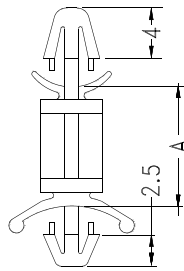


P.C.B ϕ 3.5
THICKNESS 1.6

PART NO	PACKAGE
CBCS-14	1000



P.C.B ϕ 3.5
THICKNESS 1.2~1.7

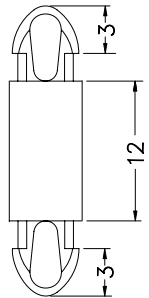


CHASSIS ϕ 3.5
THICKNESS 0.8~2.0

PART NO	A	PACKAGE
LCD-3	3.2	2000
LCD-4	4.0	
LCD-5	4.8	1000
LCD-6	6.4	
LCD-7	7.0	
LCD-8	8.0	
LCD-9	9.6	
LCD-11	11.2	
LCD-12	12.7	
LCD-16	16.0	
LCD-19	19.1	



P.C.B ϕ 3.5
THICKNESS 1.6



P.C.B ϕ 3.5
THICKNESS 1.6

PART NO	PACKAGE
MAD3.5-12	1000



P.C.B ϕ 3.5
THICKNESS 1.6

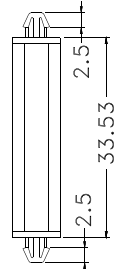


P.C.B ϕ 3.5
THICKNESS 1.6

PART NO	A	PACKAGE
MAF-6	6.0	1000
MAF-16	16.0	
MAF-18	18.0	



P.C.B ϕ 3.5
THICKNESS 1.6



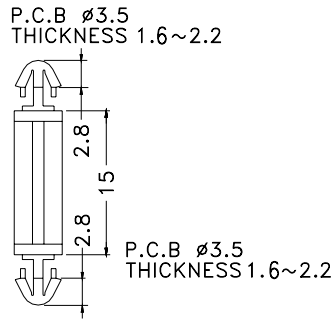
P.C.B ϕ 3.5
THICKNESS 1.6

PART NO	PACKAGE
LDE-33	1000

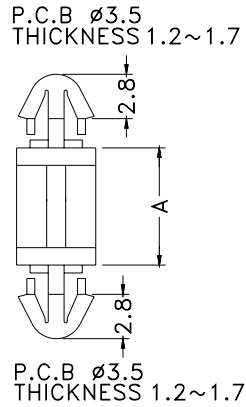
SPACER SUPPORT - Clip / Clip type

Hankook Fastener

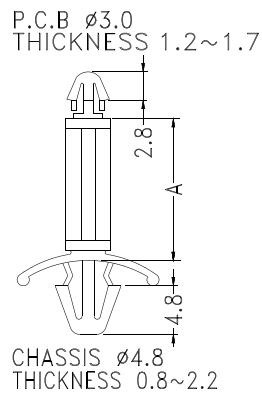
- ◆ MATERIAL: NYLON 66(UL)
- ◆ FLAME CLASS :94V-2
- ◆ COLOR: NATURAL



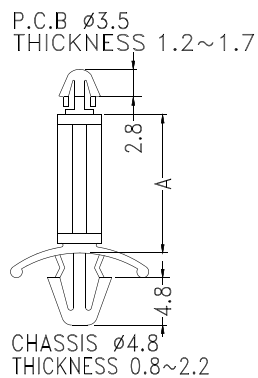
PART NO	PACKAGE
LCI-15(2)	1000



PART NO	A	PACKAGE
LCI-2.5	2.5	2000
LCI-3	3.0	
LCI-3.5	3.5	
LCI-4	4.0	
LCI-4.5	4.5	
LCI-5	5.0	1000
LCI-5.5	5.5	
LCI-6	6.0	
LCI-6.5	6.35	
LCI-7	7.0	
LCI-8	8.0	
LCI-9	9.0	
LCI-10	10.0	
LCI-11	11.0	
LCI-12	12.0	
LCI-15	15.0	



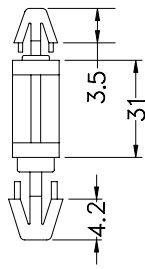
PART NO	A	PACKAGE
LCBT-3	3.2	1000
LCBT-5	4.8	
LCBT-6	6.3	
LCBT-8	8.0	
LCBT-10	10.0	
LCBT-12	12.0	
LCBT-14	14.0	
LCBT-16	16.0	
LCBT-18	18.0	
LCBT-25	25.0	



PART NO	A	PACKAGE
LCBU-3	3.2	1000
LCBU-5	5.0	
LCBU-6	6.3	
LCBU-8	8.0	
LCBU-10	10.0	
LCBU-12	12.0	
LCBU-14	14.0	
LCBU-16	16.0	
LCBU-18	18.0	
LCBU-25	25.0	



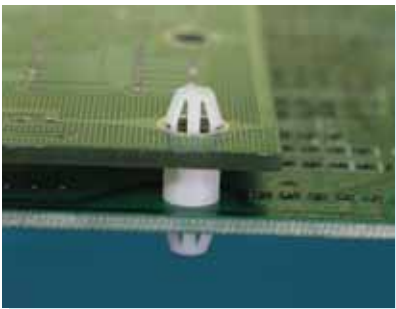
P.C.B $\varnothing 3$
THICKNESS 1.2~1.6



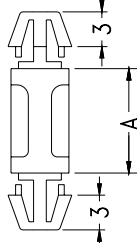
P.C.B $\varnothing 4$
THICKNESS 3.6~4.0

- ◆ MATERIAL: NYLON 66(UL)
- ◆ FLAME CLASS :94V-2/94V-0
- ◆ COLOR:NATURAL
- ◆ UNIT:mm

PART NO	PACKAGE
LCX-31	2000



P.C.B $\varnothing 4.0$
THICKNESS 1.2~1.7



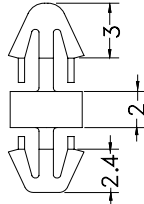
P.C.B $\varnothing 4.0$
THICKNESS 1.2~1.7

PART NO	A	PACKAGE
LCC-6	6.4	1000
LCC-8	8.0	
LCC-10S	10.0	
LCC-10	10.5	
LCC-11.5	11.5	
LCC-12S	12.0	
LCC-12	12.7	
LCC-14	14.0	
LCC-15	15.9	
LCC-18	18.0	
LCC-19	19.0	
LCC-20	20.0	
LCC-25	25.0	
LCC-27	27.0	
LCC-30	30.0	
LCC-34	34.0	
LCC-69	69.0	500
LCC-71	71.2	
LCC-72	72.0	
LCC-74	74.2	
LCC-80	80.0	

PART NO	A	PACKAGE
LCC-3S	3.0	2000
LCC-3	3.5	
LCC-4	4.0	
LCC-5	5.0	
LCC-6S	6.0	



P.C.B $\varnothing 3.0$
THICKNESS 1.6

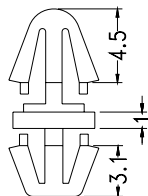


CHASSIS $\varnothing 3.0$
THICKNESS 0.8~1.0

PART NO	PACKAGE
LCVA-2	2000



P.C.B $\varnothing 4.0$
THICKNESS 1.6



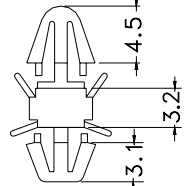
CHASSIS $\varnothing 4.0$
THICKNESS 0.8

PART NO	PACKAGE
LCK-1	2000

- ◆ MATERIAL: NYLON 66(UL)
- ◆ FLAME CLASS :94V-2
- ◆ COLOR: NATURAL
- ◆ UNIT: mm

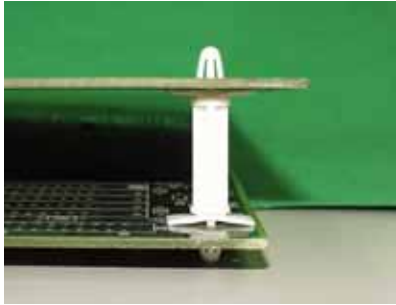


P.C.B ϕ 4.0
THICKNESS 1.2~1.6

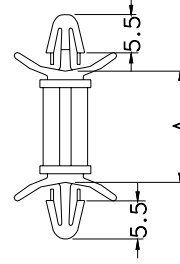


CHASSIS ϕ 4.0
THICKNESS 0.8

PART NO	PACKAGE
LCL-3.2	2000



CHASSIS ϕ 4.0
THICKNESS 0.8~2.0

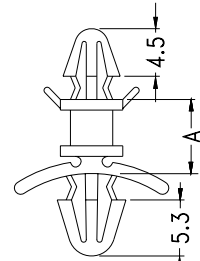


CHASSIS ϕ 4.0
THICKNESS 0.8~2.0

PART NO	A	PACKAGE
LCEO-5	4.8	1000
LCEO-6	6.4	
LCEO-9	9.5	
LCEO-12	12.7	
LCEO-15	15.9	
LCEO-19	19.0	
LCEO-22	22.2	



P.C.B ϕ 4.0
THICKNESS 1.6~1.8

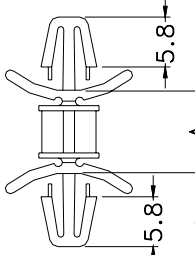


CHASSIS ϕ 4.8
THICKNESS 0.8~2.2

PART NO	A	PACKAGE
LCBS-4	4.0	1000
LCBS-5	5.0	
LCBS-6	6.35	
LCBS-7	7.0	
LCBS-9	9.2	
LCBS-10	10.0	
LCBS-12	12.5	
LCBS-15	15.7	500
LCBS-19	19.0	
LCBS-20	20.0	
LCBS-22	22.0	
LCBS-25	25.4	
LCBS-28	28.6	
LCBS-30	30.0	
LCBS-35	35.0	
LCBS-38	38.0	
LCBS-45	45.0	



CHASSIS ϕ 4.8
THICKNESS 0.8~2.0

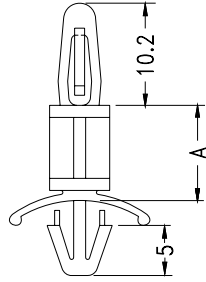


CHASSIS ϕ 4.8
THICKNESS: 0.8~2.0

PART NO	A	PACKAGE
LCBY-4.8	4.8	1000
LCBY-6.4	6.4	
LCBY-9.5	9.5	
LCBY-12.7	12.7	
LCBY-15.9	15.9	
LCBY-19.1	19.1	
LCBY-22.2	22.2	



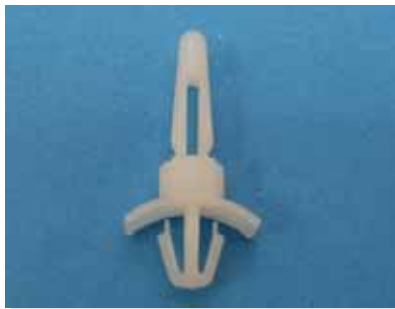
P.C.B $\phi 4.0$
THICKNESS 1.2~1.7



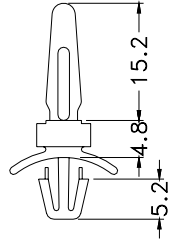
CHASSIS $\phi 4.8$
THICKNESS:0.8~2.0

PART NO	A	PACKAGE
LCS-3	3.5	1000
LCS-5	4.8	
LCS-6	6.0	
LCS-6A	6.4	
LCS-8	7.9	
LCS-9	9.5	
LCS-11	11.1	
LCS-12	12.7	
LCS-16	15.9	
LCS-19	19.1	
LCS-22	22.2	
LCS-25	25.4	
LCS-28	28.6	
★LCS-31.1	31.1	
★LCS-31.7	31.7	
LCS-35	34.9	

- ◆ MATERIAL:NYLON 66(UL)
- ◆ FLAME CLASS :94V-2
- ◆ COLOR:NATURAL



P.C.B $\phi 4.0$
THICKNESS 1.2~1.7

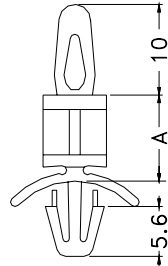


CHASSIS $\phi 4.8$
THICKNESS 0.8~2.0

PART NO	PACKAGE
LCY-4.8	1000



P.C.B $\phi 4.0$
THICKNESS 1.2~1.7

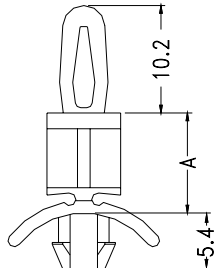


P.C.B $\phi 4.8$
THICKNESS 0.8~2.5

PART NO	A	PACKAGE
LCP-9	9.5	1000
LCP-22	22.2	



P.C.B $\phi 4.0$
THICKNESS 1.2~1.7



P.C.B $\phi 4.8$
THICKNESS 0.8~2.5

PART NO	A	PACKAGE
UCBS-5	4.8	1000
UCBS-6	6.4	
UCBS-9	9.5	
UCBS-12	12.7	
UCBS-15	15.9	
UCBS-19	19.1	
UCBS-22	22.2	